

TULIP



TU04 Teal



TU02 Honeybee



TU05 Red Hot



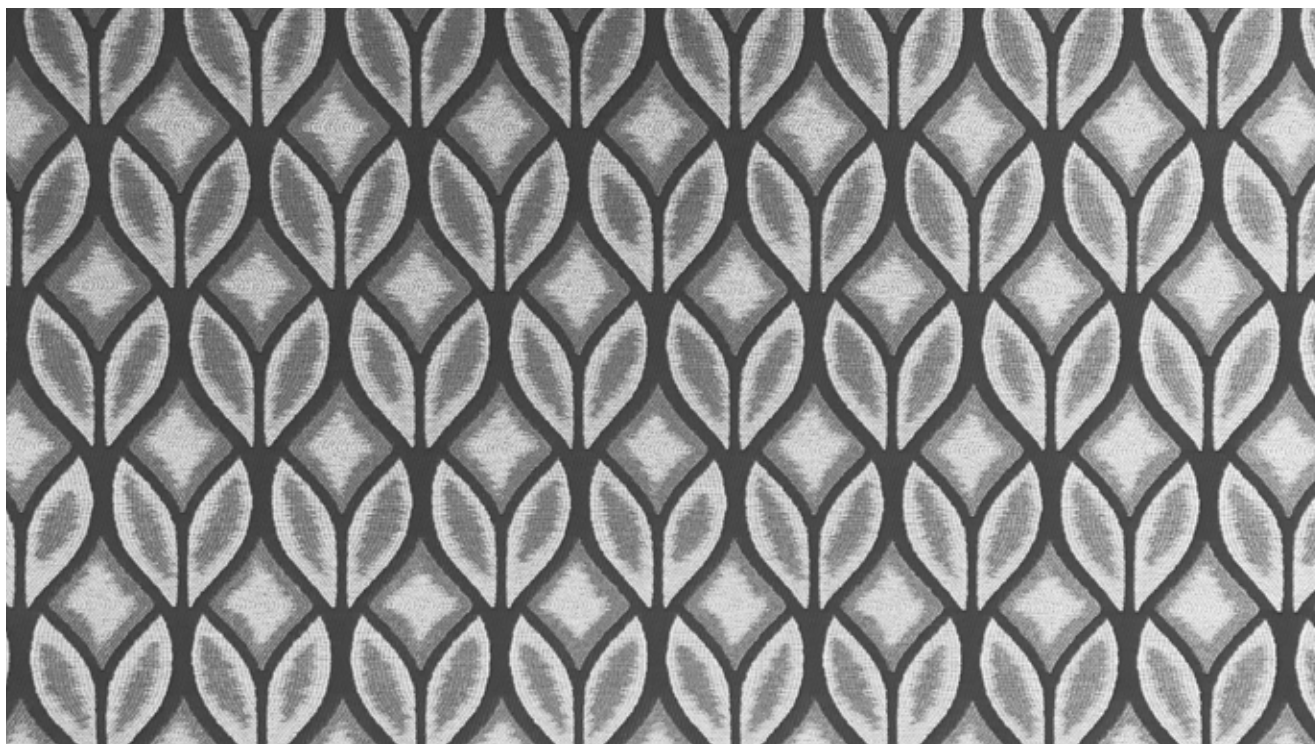
TU01 Escape



TU03 Green Grape

TULIP

DESIGN:	Paul Brayton Designs Exclusive
CONTENT:	74% Polyester (16% Post Consumer) & 26% Nylon
FINISH:	Defend (SR) Airo/Frame
BACKING:	Light Acrylic
WIDTH: 54"	REPEAT: 9" V x 9" H
PATTERN DIRECTION:	Shown up the roll
APPLICATION:	Heavy Duty Upholstery
DURABILITY:	100,000+ Double Rubs - Wyzenbeek
FLAMMABILITY CLASS:	California Technical Bulletin 117: 2013. UFAC, Class 1. NFPA-260, Class 1
CLEANING CODE:	W / S



 **WARNING:** Cancer and Reproductive Harm. For more information go to www.P65Warnings.ca.gov